



Park View

at SOUTH PANTOPS

Affordable Senior Living

Your New Lifestyle Begins Here

Services

- Social and recreational activities
- Monthly community updates with management
- “Worry Free” 24-hour maintenance
- Private van service
- Education and health seminars
- Assistance with income tax preparation
- Health education and screenings

Conveniently Located Near

- Grocery & convenience stores along River Bend Rd. and Rt. 250
- Physician offices
- Emergency care centers
- Specialty retail shops and restaurants

Community Features

- Quiet rural setting, yet just minutes from the Rt. 250 bustle
- Beautifully landscaped grounds and patio
- Video controlled lobby entrance

- Community room with kitchen
- Library, computer room, and exercise center
- Pre-wired telephone and cable TV
- Individually controlled heating & air conditioning
- Wellness suite
- TV lounge
- Beauty and barber services
- Laundry facility
- Elevator

Apartment Features

- Monitored emergency pull cords
- Smoke alarms and fire sprinklers
- Bathroom with enhanced safety features
- Fully-equipped kitchen
- Mini-blinds on all windows
- Handicapped accessible and adaptable



Resident will benefit from the services and programs available to them through our not-for-profit partner, the Jefferson County Board on Aging (JABA).



Park View at South Pantops

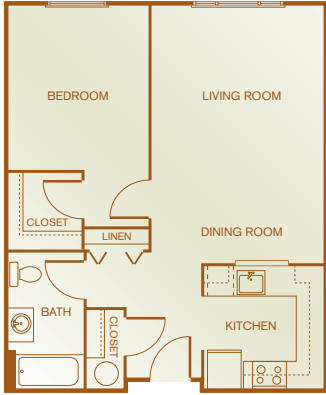
210 South Pantops Road • Charlottesville, Virginia 22911

Phone: (434) 923-0200 • Fax: (434) 923-0201

Email: parkviewsouthpantops@sheltergrp.com



Floor Plans & Directions



1 Bedroom
654 Square Feet



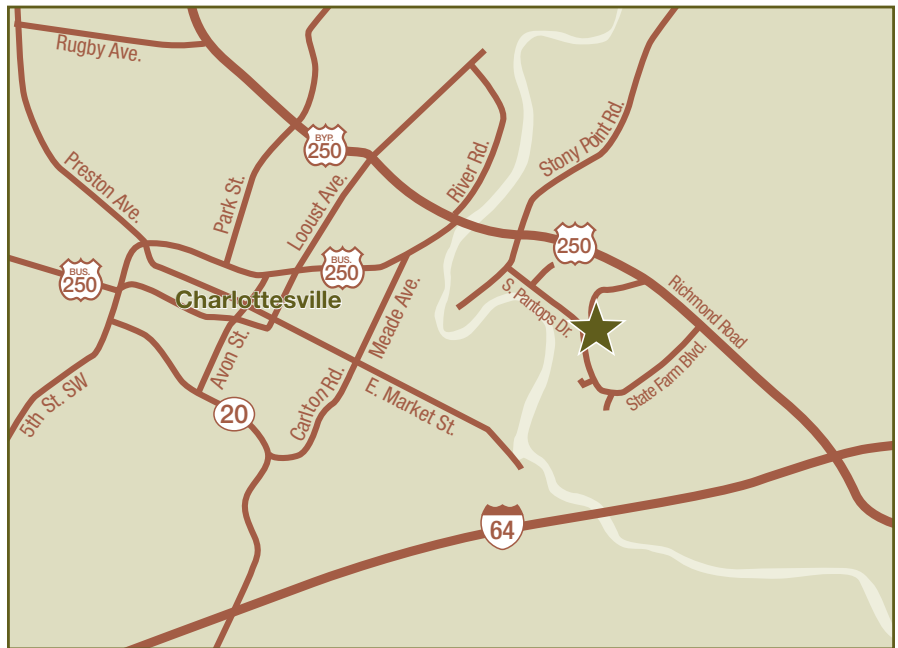
2 Bedrooms
936 Square Feet



2 Bedrooms Corner
962 Square Feet

Floor plans shown are representative and exact floor plans and measurements may vary. Additional floor plans available.

<i>Apartment Availability</i>
<i>Available Apartment</i>
<i>Monthly Rent</i>
<i>Security Deposit</i>
<i>Application Fee</i>



From Rt. 250, turn onto State Farm Road then right onto South Pantops. Park View at South Pantops will be up the hill on your left across from Carriage Hill.



Park View at South Pantops
210 South Pantops Road • Charlottesville, Virginia 22911
Phone: (434) 923-0200 • Fax: (434) 923-0201
Email: parkviewsouthpantops@sheltergrp.com

