

ASHLAND COMMONS



DRIVING DIRECTIONS:

From North Charles Street, turn right on Mulberry Street (US 40 East). Turn left on Broadway and then turn right on East Eager Street. Ashland Commons will be on your right.

ASHLAND COMMONS

WHERE GREAT LIVING BEGINS

1715 East Eager Street
Baltimore, MD 21205
410-276-2364 • fax 410-276-2365
ashlandcommons@sheltergrp.com



WHERE DO YOU WANT TO LIVE?

Ashland Commons has been designed specifically for families. The community's features, amenities and the social and recreational programming are all designed to meet the lifestyle needs of working moms, dads and their children.

Ashland Commons offers attractive, light-filled apartments in a new, high-quality building in a revitalized neighborhood near schools, shopping,

employment opportunities, and public transportation. The building offers free parking for residents and lots of common space where residents can meet, talk, and share activities. For children, there is an after school program that includes computer learning, activities, and tutoring.

Ashland Commons is a community you'll be proud to call home and show off to your friends!

THE ASHLAND COMMONS' ADVANTAGE

Take a look around and you'll soon see that Ashland Commons offers you the best value:

APARTMENT AMENITIES

- Choice of 1, 2 or 3-bedroom apartments
- Fully equipped kitchen
- Window treatments
- Washer and dryer in each apartment
- Individually controlled heat and air conditioning
- Spacious floor plans

COMMUNITY AMENITIES

- Social and recreational activities
- Fitness center
- Electronically controlled building access
- 24-hour emergency maintenance
- Two blocks from Metro
- Community room with kitchen
- Computer room

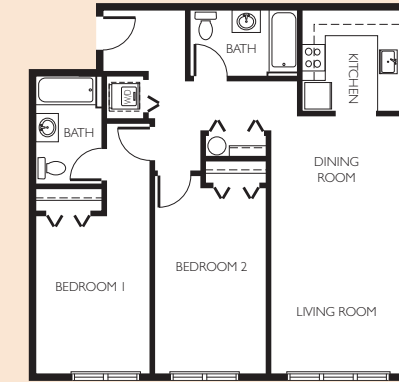


1715 East Eager Street
 Baltimore, MD 21205
 410-276-2364 • fax 410-276-2365
 ashlandcommons@sheltergrp.com

Security Deposit \$: _____

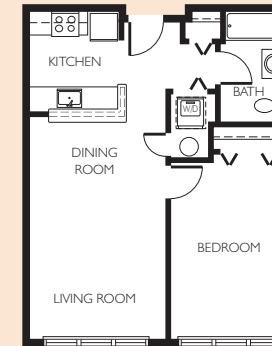
Pet Deposit \$: _____

**All square footage is approximate.*



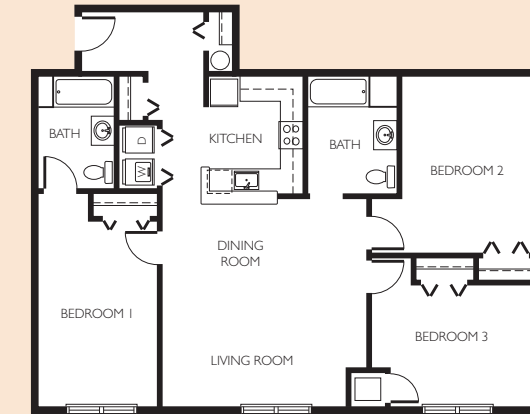
2 Bedrooms ■ 2 Baths ■ 1,047 sq.ft.

Rent \$: _____



1 Bedroom ■ 1 Bath ■ 638 sq.ft.

Rent \$: _____



3 Bedrooms ■ 2 Baths ■ 1,270 sq.ft.

Rent \$: _____